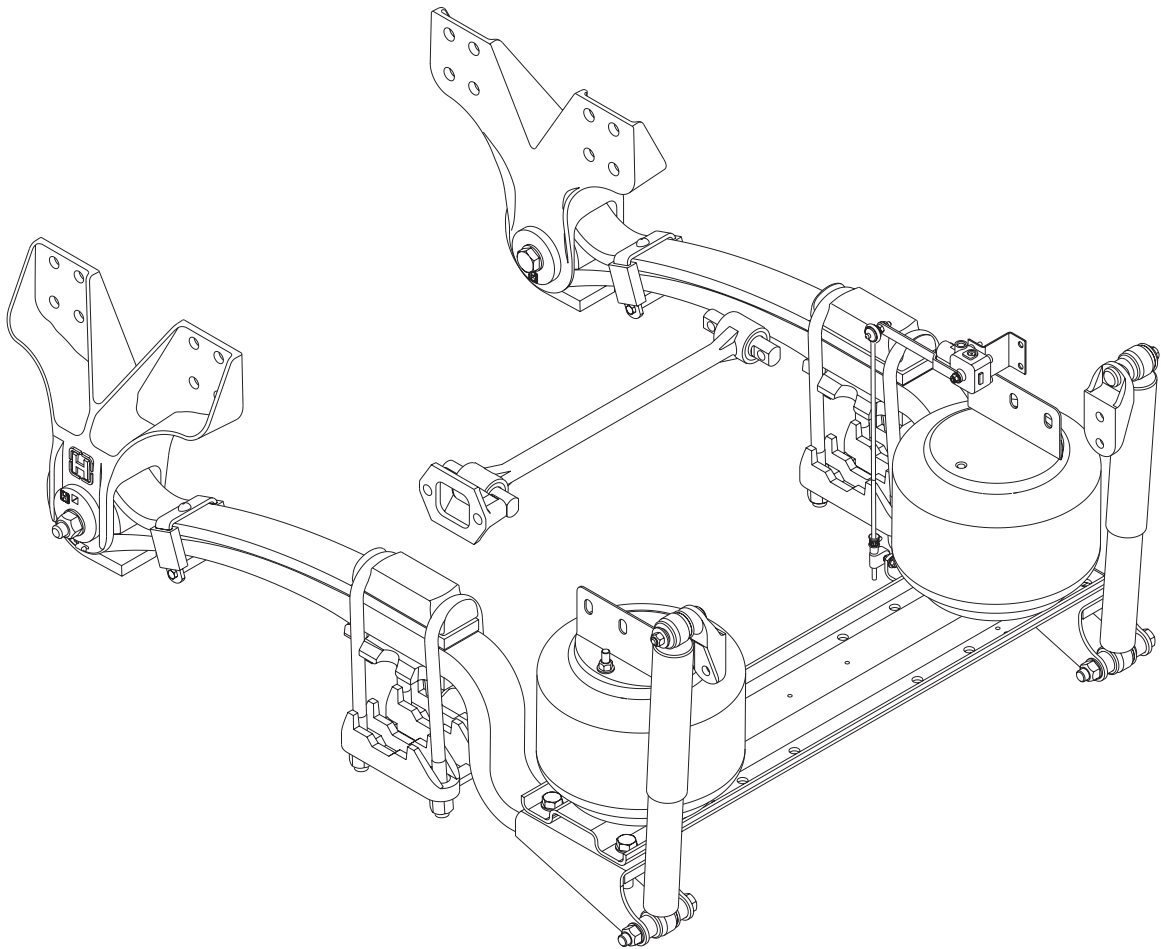


H PARTS LIST

COMFORT AIR®

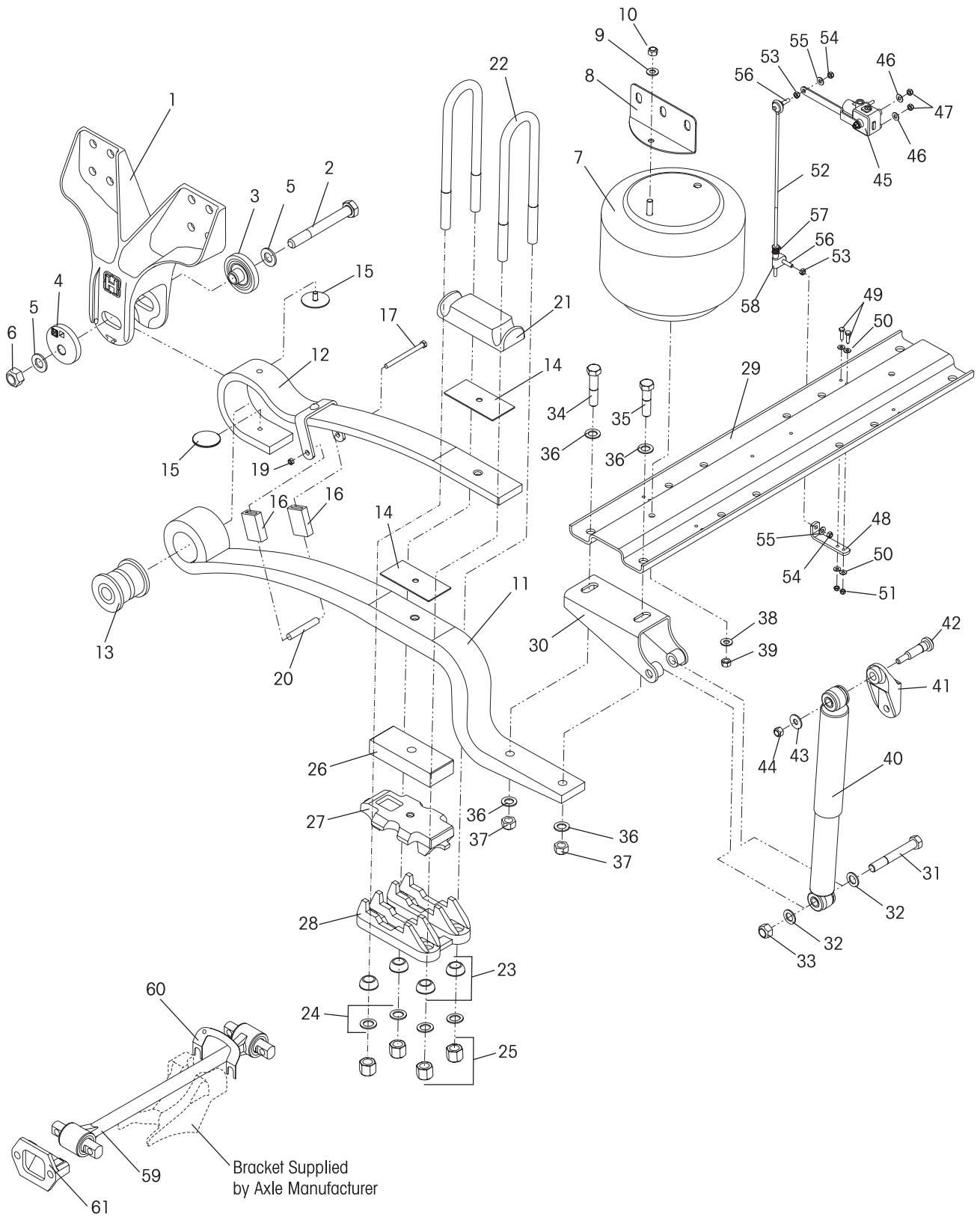
LIT NO: SP-173

DATE: December 2007 REVISION: C



For The Road Ahead™

H HENDRICKSON





KEY NO.	PART NO.	DESCRIPTION	NO.REQ.	KEY NO.	PART NO.	DESCRIPTION	NO.REQ.
1	60784-000	Frame Hanger	2	29		Cross Channel (Contact Hendrickson Tech Services for proper Cross Channel)	1
	60632-001	QUIK-ALIGN® Service Kit , Axle Set (Includes Key Nos. 2-6)			57356-000	Lower Shock Bracket Assembly (Includes Key Nos. 30-33)	2
	34013-103	Pivot Bushing Service Kit , One Side (Includes Key Nos. 2, 5-6, 13, 15)		30		*Lower Shock Bracket	2
2	64107-000	1"-8 UNC Bolt 7.50"	2	31	50764-002	¾"-10 UNC Bolt - 5.50"	2
3	64633-000	QUIK-ALIGN Concentric Collar	3	32	22962-001	¾" Hardened Washer	4
4	64632-000	QUIK-ALIGN Eccentric Collar	1	33	49842-000	¾"-10 UNC Locknut	2
5	22962-035	1" Hardened Washer	4		50763-004	Cross Channel Fastener Service Kit , Axle Set (Includes Key Nos. 34-37)	
6	64108-000	1"-8 UNC Locknut	2	34	50764-003	¾"-10 UNC Bolt - 3.50"	2
	60925-002	Air Spring Assembly (Includes Key Nos. 7-10)	2	35	50764-005	¾"-10 UNC Bolt - 3.00"	2
	60929-002	Air Spring Assembly Front Engine (Includes Key Nos. 7-10)	2	36	22962-001	¾" Hardened Washer	8
7		*Air Spring	2	37	49842-000	¾"-10 UNC Locknut	4
8	57096-002	Air Spring Bracket	2		49177-006	Air Spring Fastener Service Kit , Axle Set (Includes Key Nos. 38-39)	
9	22962-014	½" Flat Washer	2	38	22962-014	½" Hardened Washer	2
10	17700-010	½"-13UNC Nylocknut	2	39	17700-010	½"-13 UNC Nylocknut	2
	60779-000	Main Support Assembly (Includes Key Nos. 11-20)	2	40	60998-001	Shock Absorber	2
11		*Main Support Member	2		57322-002	Upper Shock Bracket Assembly (Includes Key Nos. 41-44)	2
12		*Secondary Leaf	2	41		*Upper Shock Bracket	2
13	58648-000	Pivot Bushing	2	42	50368-000	½"-13 UNC Serrated Shank Bolt	2
14	37674-051	Liner	4	43	22962-031	½" Hardened Washer	2
15	64817-000	Puck	4	44	49846-000	½"-13 UNC Locknut	2
	49175-026	Spring Clip Fastener Service Kit , Axle Set (Includes Key Nos.16-19)			59013-000	Height Control Valve Service Kit , Axle Set (Includes Key Nos. 45-47)	
16	64272-000	Spring Clip Sleeve	4	45		*Height Control Valve	1
17	37042-002	⅞"-14 UNC Bolt	2	46		*¼" Hardened Washer	2
18	22962-027	⅞" Washer (Not Shown)	2	47		*¼"-20 UNC Locknut	2
19	17700-007	⅞"-14 UNC Nut	2			HCV Linkage Lower Bracket Service Kit (Includes Key Nos. 48-51)	
20		*Clip Bolt Spacer	2		57430-000	All Except Rear Engine	
21	56805-000	Top Pad (All except 15,000 lb. capacity)	2		57430-003	Rear Engine Only	
	57724-000	Top Pad (15,000 lb. capacity)	2	48	56789-000	HCV Linkage Bracket	1
		U-bolt Service Kit , Axle Set ¾" Specify Length, (Includes Key Nos. 22-25)			58367-000	HCV Linkage Bracket (Rear Engine)	
	48718-	¾"-15,000 lb. capacity, (Includes Key Nos. 22, 24-25)		49	56935-002	¼"-20 UNC Bolt - 1.00"	2
	48718-104	¾"-15,000 lb. capacity, (Includes Key Nos. 22, 24-25)		50	22962-028	¼" Hardened Washer	4
22	47417-	¾"-14 UNF U-bolt - Specify Length	4	51	49983-000	¼"-20 UNC Locknut	2
	49684-014	¾" 26 UNF U-bolt - 12.5" (15,000 lbs.Capacity)	4		58994-	Height Control Valve Linkage Assembly, Specify Length (Includes Key Nos. 52-58)	1
23	48574-000	Spherical Washer	8	52		*HCV Linkage Rod	1
24	22962-002	⅞" Hardened Flat Washer	8	53		*⅞"-18 UNC Jam Nut	2
	22962-001	¾" Hardened Flat Washer (15,000 lb. Capacity)	8	54		*⅞"-18 UNC Locknut	2
25	50765-000	⅞" 14UNF U-Bolt Locknut	8	55		*⅞" Hardened Washer	2
	49685-000	¾" 16UNF U-Bolt Locknut (15,000 lb. Capacity)	8	56		*⅞"-18 UNC Stud	2
26	48531-014	Spacer 1.5" (As Required)	2	57		*Valve Arm Clamp	1
27		Spring Seat	2	58		*Adjustable Valve Arm Joint	1
		Meritor RS15-120		59	62000-	Transverse Torque Rod Assembly, Specify Length	1
	57022-010	4.5° Pinion Angle LH/RH Meritor RS21-145, RS23-160		60	49689-000	Torque Rod Shim	As Req.
	56501-006	4.5° Pinion Angle LH/RH		61	22186-000	Transverse Torque Rod Frame Bracket	1
	56501-019	0.0° Pinion Angle LH/RH					
	56501-020	4.5° Pinion Angle LH/RH					
	56501-021	0.0° Pinion Angle LH/RH Meritor RC23-160					
	56501-020	Negative 4.5° Pinion Angle LH/RH					
28		Axle Bottom Cap	2				
		Meritor RS15-120					
	57024-000	2-5.0° Pinion Angle LH/RH Meritor RS21-145, RS23-160					
	50216-000	0-9.5° Pinion Angle LH/RH Meritor RC23-160					
	50216-000	Negative 0-9.5° Angle LH/RH					

NOTE

* Item included in assembly only, part not sold separately.

This is a general parts list to provide directional information. Components may vary by model. For part questions, contact Hendrickson Sales Engineering at 630.910.2800 (email: truckparts@hendrickson-intl.com).

www.hendrickson-intl.com



Truck Suspension Systems
800 South Frontage Road
Woodridge, IL 60517-4904 USA

630.910.2800
Fax 630.910.2899