

PARTS LIST

SHOCK STRAPS

LIT NO: 97114-051

DATE: October 2014 REVISION: E

INTRAAX & HT SHOCK ABSORBER LIMIT STRAPS

INTRODUCTION

The purpose of this bulletin is to identify the shock absorber straps and strap kits that are available for the installation to the Hendrickson INTRAAX and HT family of suspensions.

SHOCK STRAP INSTALLATION

1. Prior to installation of shock absorber straps, the following pre-requisites should be observed:
 - a. Ride height should be checked and adjusted if required (refer to L341 – Intraax Installation procedures).
 - b. Trailer should be at kerb weight and on a firm level surface.
2. To prevent damage to shock absorber straps, the suspension should be lowered (dumped) in the following applications:
 - a. On tip over axle tipper applications, especially for trailers that perform short trips and frequent tipping.
 - b. Aggregate or grain tipper applications.
 - c. On applications where loads are frequently applied and removed e.g. containers (Skel trailers).
3. Shock absorber rebound limit straps are designed to prevent over extension of the shock absorber in light to medium applications. For more severe applications such as frequent off-road use, frequent uploading via platform lifts or tip over axle where the suspension leaves the ground during unloading, it is recommended that a Hendrickson Auxiliary Rebound Limiter (ARL) system be used.

SHOCK STRAP KITS

4. The Hendrickson shock absorber strap kits (shown at Figure 1) contain the following items:
 - a. Shock Straps (refer to item 1);
 - b. Nylon Cable Ties (refer to item 2);
 - c. Clevis Brackets (refer to item 3); and
 - d. Technical Drawing (refer to item 4).

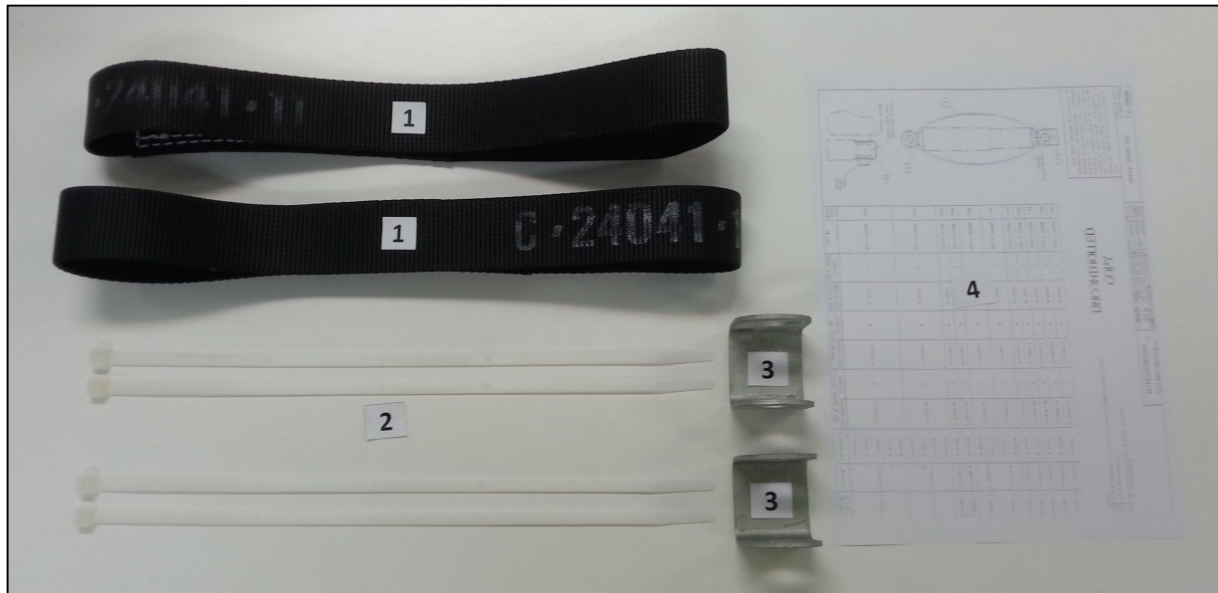


Figure 1

Serial	Shock Strap Kit Part No.	Item 1 Shock Strap	Item 2 Nylon Tie	Item 3 Shock Clevis	Item 4 Tech Drawing
(a)	(b)	(c)	(d)	(e)	(f)
1.	98918-003	S-24041-1	S-11430-1	98899-001	C-14587
2.	98918-009	S-24041-16		S-20919	N/A
3.	C-14587L	S-24041		Not Included	C-14587
4.	C-14587-1L	S-24041-1			
5.	C-14587-3L	S-24041-3			
6.	C-24587-4L	S-24041-4			
7.	C-14587-5L	S-24041-5			
8.	C-14587-7L	S-24041-7			
9.	C-14587-8L	S-24041-8			
10.	S-23086-2	S-24041-8			
11.	S-23086-4	S-24041-10			
12.	S-23086-5	S-24041-11			
13.	S-23086-6	S-24041-3			
14.	S-23086-8	S-24041-14			
15.	S-23086-10	S-24041-18			

SHOCK STRAP DIMENSIONS

5. To measure shock strap length, the strap must be pressed onto a flat surface with a steel ruler or similar, then measured from end to end, refer to dimension X in Figure 2.

NOTE 1: All dimensions listed below are $\pm 3\text{mm}$.

NOTE 2: The purpose of the table below is to assist operators with part number identification, in cases where the part number on an existing shock absorber strap is illegible and, the shock absorber installed is unknown.

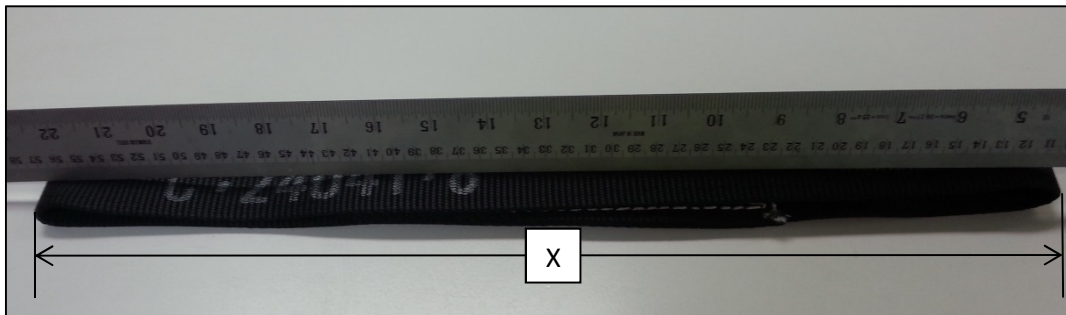


Figure 2

Serial	Shock Strap Part No.	Shock Strap Length (mm)
(a)	(b)	(c)
1.	S-24041	730
2.	S-24041-1	461
3.	S-24041-2	556
4.	S-24041-3	525
5.	S-24041-4	662
6.	S-24041-5	603
7.	S-24041-7	705
8.	S-24041-8	473
9.	S-24041-10	395
10.	S-24041-11	430
11.	S-24041-12	510
12.	S-24041-14	405
13.	S-24041-16	480
14.	S-24041-18	382

SHOCK STRAP APPLICATIONS

6. Shock absorber strap application is determined by the extended, compressed and strap restricted length of the shock absorber. All shock absorber dimensions are measured between the centres of the mounting eyes, refer to dimension A in Figure 3.

NOTE 1: All dimensions listed below are $\pm 3\text{mm}$ unless otherwise indicated.

NOTE 2: Shock restricted length is the maximum shock extension possible with strap fitted.

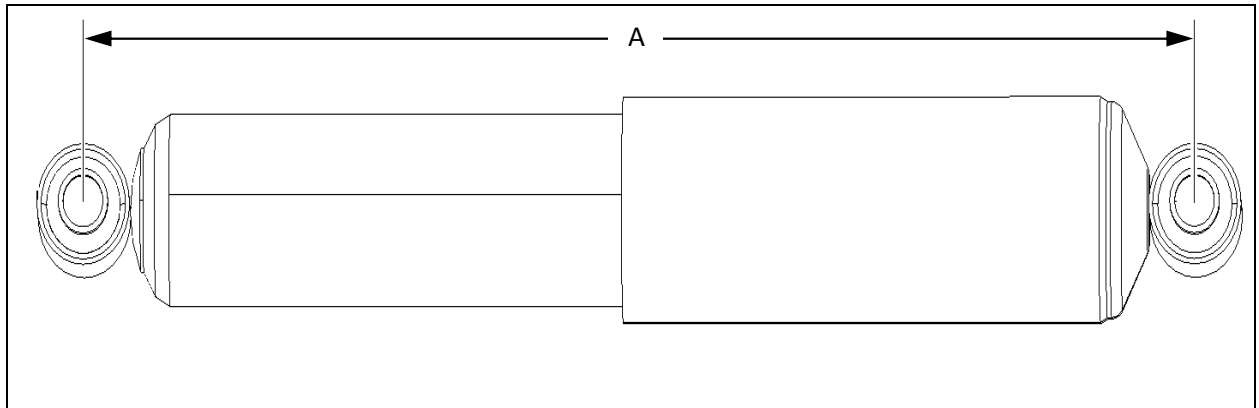


Figure 3

Serial	Shock Absorber Part No.	Shock Extended Length (mm)	Shock Compressed Length (mm)	Shock Restricted Length (mm)	Shock Strap Part No.	Shock Strap Kit
(a)	(b)	(c)	(d)	(e)	(f)	(g)
1.	98583-010	367.9	263.9	337	S-24041-14	S-23086-8
2.	98583-011	447.0	301.0	410	S-24041-16	98918-009
3.	A-20002	445.5	295.4	410	S-24041-16	98918-009
4.	A-2218	609.9	377.2	540	S-24041-5	C-14587-5
5.	S-20889	444.2	297.4	410	S-24041-16	98918-009
6.	S-21699	441.2	298.2	410	S-24041-16	98918-009
7.	S-2212	514.4	329.4	464	S-24041-3	C-14587-3L or S-23086-6
8.	S-23316	513.8	332.2	464	S-24041-3	C-14587-3L or S-23086-6
9.	S-23566	445.5	295.4	410	S-24041-16	98918-009
10.	S-23649	407.4	273.3	365	S-24041-11	S-23086-5
11.	S-23651	369.3	254.3	327	S-24041-10	S-23086-4
12.	S-23743	402.6	271.8	365	S-24041-11	S-23086-5
13.	S-23744	335.8	240.0	311	S-24041-18	S-23086-10
14.	S-24023	444.2	297.4	410	S-24041-16	98918-009
15.	S-24579	367.8	256.1	337	S-24041-14	S-23086-8
16.	S-25436	627.9	392.4	603	S-24041-4	C-14587-4L
17.	S-25437	729.0	443.2	670	S-24041	C-14587L
18.	S-25512	678.7	417.8	640	S-24041-7	C-14587-7L
19.	S-25515	494.5	322.6	464	S-24041-3	C-14587-3L or S-23086-6

Information contained in this literature was accurate at the time of publication, Product changes may have been made after the publication date that are not reflected here.



ABN 21 004 992 769
32-44 Letcon Drive, P.O. Box 1063, Dandenong, Victoria, 3175
Phone 61.3.8792.3600 Fax 61.3.8792.3699
www.hendrickson.com.au