

# H TECHNICAL BULLETIN

## TRAILER AIR SUSPENSIONS

**No:** 49441-281  
**Subject:** *Wear Washer Selection*  
**Date:** November 2006 **Revision:** C

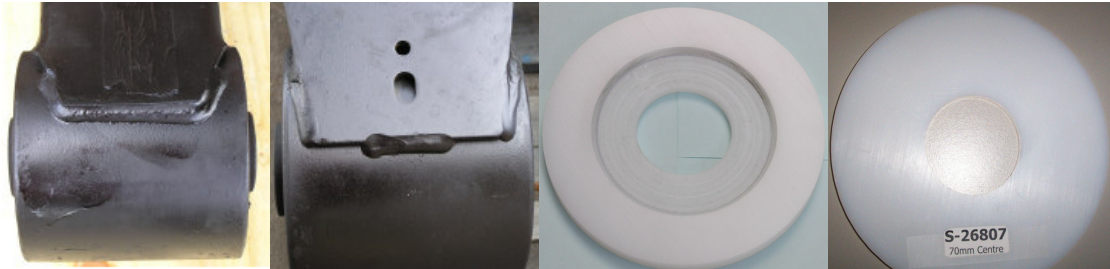


Figure 1

Figure 2

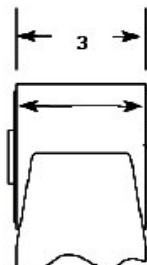
S-21099

S-26807

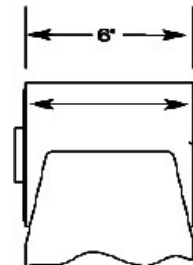


S-26824

S-26551



AANT 3" Wide



Intraax 6" Wide

### Narrow Bush Intraax Suspensions

Model	Notes	Part No	
AANT230	3" Wide (Prior to June-02)	S-21099	Suits Tri-Functional bush with 60mm bush centre
AANT230	3" Wide (After to June-02)	S-26807	Suits Tri-Functional bush with 70mm bush centre

### Wide Bush Intraax Suspensions

Model	As welded in Figure 1		As Welded in Figure 2	
	Notes	Part No	Notes	Part No
AAT230	6" Wide Bush	S-21099	6" Wide Bush	S-26551
AAL230	6" Wide Bush	S-21099	6" Wide Bush	S-26551
AAL250	6" Wide Bush	S-21099	6" Wide Bush	S-26824
EDL300	6" Wide Bush	S-21099	6" Wide Bush	S-26824
EDT300	6" Wide Bush	S-21099	6" Wide Bush	S-26824

### HT Series Suspensions

Model	Notes	Part No	Notes	Part No
HT230	6" Wide Bush	S-21099	6" Wide Bush	S-26824
HT300	6" Wide Bush	S-21099	6" Wide Bush	S-26824

If the trailing arm is worn by more than 1/4" fit only S-21099 to Intraax and HT series suspensions

**This document supersedes all previous ones on this subject  
 If further details or assistance are required,  
 contact Hendrickson Product Support on (03) 9767 3400**