

TECHNICAL BULLETIN

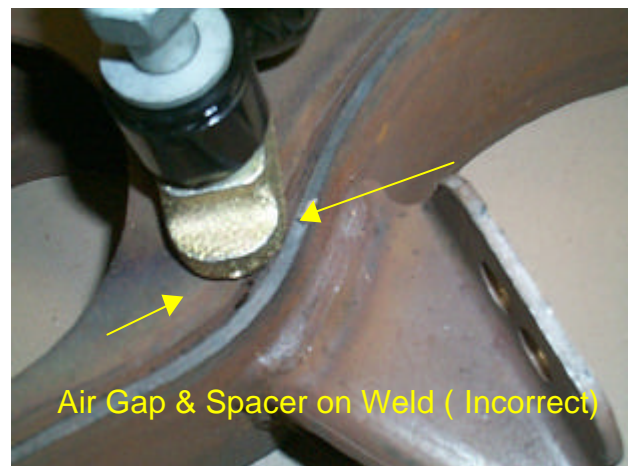
INTRAAX/ MAXITRAAX TRAILER AIR SUSPENSIONS

No: 97117-116
Subject: Shock Absorber Installation
Date: July 2003 **Revision:** A



Correct Placement

(Axle not shown for clarity)



Incorrect Placement

As part of our continuous product improvement program, Hendrickson wish to advise Installers and Authorised Repairers that the correct procedure for the fitting of Shock Absorbers to Hendrickson Intraax / MaxiTraax Suspensions

PROCEDURE

1. Make sure the mating surfaces are free from Dirt, Paint and Weld Splatter etc.
2. Place the shock Absorber into the Top Clevis and secure in place with the Bolt and Nut, Do Not Tighten at this time.
3. Extend to Shock Absorber to allow fitment of the Bottom Bolt, Washers and Spacer Block.
4. Screw the Lower Bolt into the Trailing Arm so that it is firm, Do Not Tighten at this time.
5. Ensure that the spacer Block is correctly in position and is not sitting on the welding on the edge of the Trailing Arm.
6. Once you are satisfied that the Spacer Block is correct, Check that the ride Height is Correct and adjust if required.
7. Tighten the Lower Shock Absorber Bolt to 230 lbs.ft in 3 gradual stages.
8. Tighten the Top Shock Absorber Bolt and Nut
9. If further assistance is required, contact the Hendrickson Product Support Department on 03 9767 3400 or E-mail your questions to : technicalservice@hendrickson.com.au

WARNING - HENDRICKSON REMINDS USERS THE USE OF A MODIFIED OR SUBSTITUTE PART IS NOT RECOMMENDED BECAUSE THE PART MAY NOT MEET HENDRICKSON'S SPECIFICATIONS, WHICH COULD LEAD TO FAILURE OF THE PART, LOSS OF VEHICLE CONTROL AND PERSONAL INJURY.