

H ASSEMBLY INSTRUCTIONS

RT™/RTE™ SHOCK ABSORBER KIT

NO: 59310-003

DATE: March 1999 REVISION: B

INTRODUCTION

The following instructions are recommended for installation of a Genuine Hendrickson shock absorber kit.

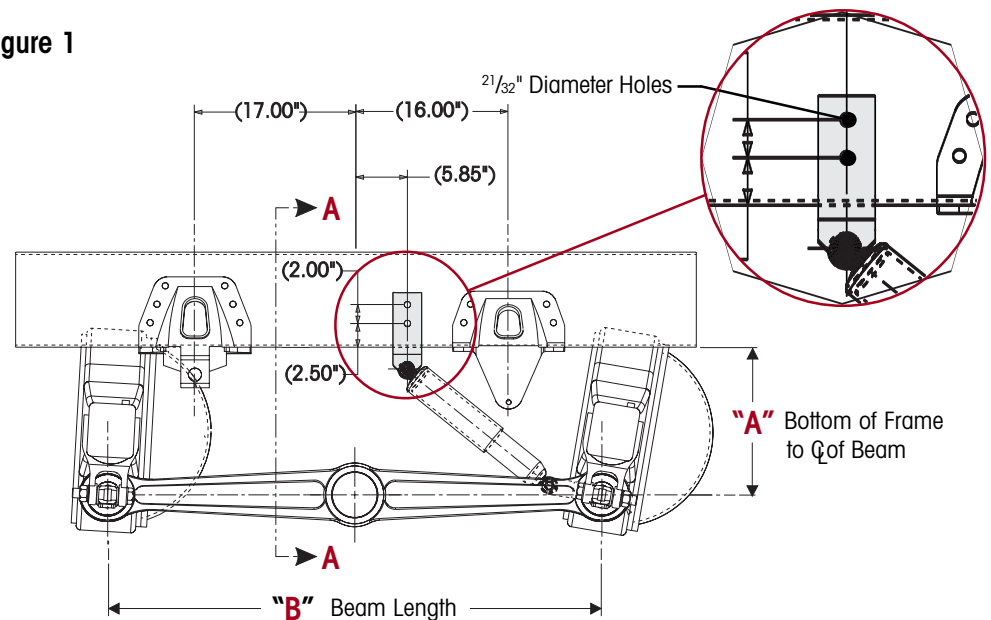
The shock absorber kit is available for the rear drive axles equipped with RT™ and RTE™ Series suspensions equipped with Hendrickson's Bar Pin End Connection. The Shock Kit selection matrix below corresponds with dimensions in Figure 1.

-A- LOADED RIDE HEIGHT RANGE	-B- BEAM LENGTH	4 SHOCK KIT	2 SHOCK KIT
17.41" - 19.27"	52" and 54" (Standard)	57803-001	57803-005
15.25" - 17.37"	52" and 54"	57803-002	57803-006
20.42" - 21.96"	52" and 54"	57803-003	57803-007
15.25" - 17.37"	60"	57803-001	57803-005
17.41" - 21.96"	60"	57803-004	57803-008

INSTRUCTIONS

1. To install shock absorber kit it is first necessary to chock front wheels and block front end of the vehicle to prevent movement of the vehicle during removal and installation procedures.
2. Layout and drill (2) $2\frac{1}{32}$ " diameter holes on both sides of the frame for each bracket. The hole locations are identified in Figure 1. The upper shock bracket supplied can also be used as a template.

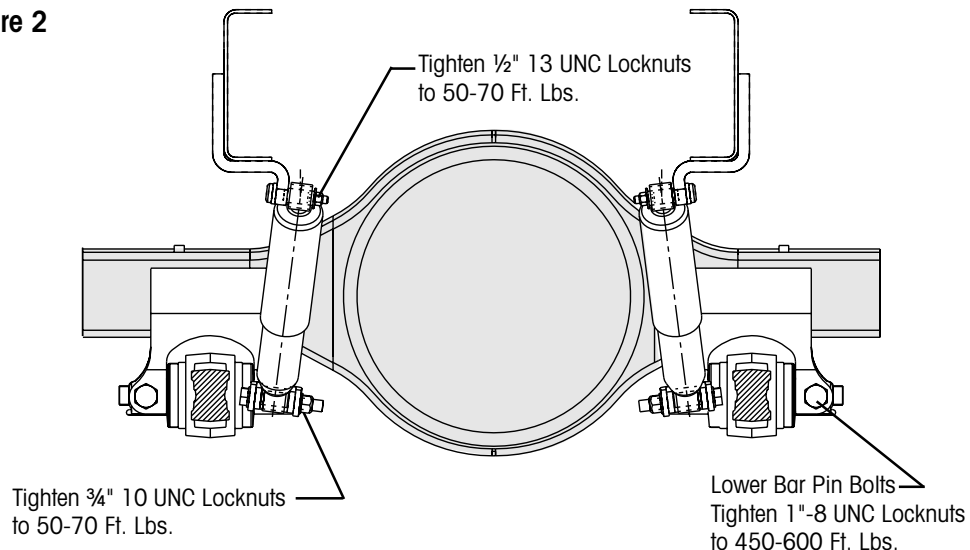
Figure 1



INSTRUCTIONS
(CONT.)

3. Assemble the upper shock brackets to the frame with the $\frac{5}{8}$ "-1 1 UNC fasteners supplied in the kit. Tighten to 150-205 ft. lbs. torque.
4. Remove the inside bar pin connection bolt, washer, and locknut.
5. Assemble the shock absorber to the lower shock bracket. Flat washers are located under both the bolt head and the locknut. Connect this assembly with the 1" lower bar pin bolt and position to align through the axle bracket. Fasten the washers and locknuts but do not tighten at this time.

Figure 2



6. Assemble the shock absorbers on the upper brackets using the $\frac{1}{2}$ "-13 UNC fasteners supplied in the kit. The flat washers are located under both the bolt heads and the locknuts, do not tighten at this time.
7. The bar pin connection requires the 1" diameter, grade 8 bolts and 1"-8 UNC grade C locknuts. One inch hardened flat washers are located under both the bolt heads and the locknuts. The bolts are installed from the center of the beam toward the end making removal and final torque assembly easy. Tighten the 1"-8 UNC locknuts to 450-600 ft. lbs. torque.
8. Complete the fastener torque on the shock absorbers locknuts to 50-70 ft. lbs.

WARNING

DO NOT MODIFY OR REWORK PARTS. DO NOT USE SUBSTITUTE PARTS. USE OF A MODIFIED OR SUBSTITUTE PART IS NOT RECOMMENDED BECAUSE THE PART MAY NOT MEET HENDRICKSON'S SPECIFICATIONS, WHICH COULD RESULT IN FAILURE OF THE PART, LOSS OF VEHICLE CONTROL, AND POSSIBLE PERSONAL INJURY OR PROPERTY DAMAGE. A MECHANIC USING A SERVICE PROCEDURE OR TOOL WHICH HAS NOT BEEN RECOMMENDED BY HENDRICKSON MUST FIRST SATISFY HIMSELF THAT NEITHER HIS SAFETY NOR THE VEHICLE'S SAFETY WILL BE JEOPARDIZED BY THE METHOD OR TOOL SELECTED.

A SHIM MUST BE INSTALLED AT EACH BOLT LOCATION. THE SAME PART NUMBER SHIM IN THE SAME ORIENTATION MUST BE USED AT BOTH BOLT LOCATIONS ON ANY ONE BUSHING ASSEMBLY. DO NOT INSTALL OR STACK MORE THAN ONE SHIM AT EACH BOLT LOCATION. USE GENUINE HENDRICKSON SHIMS, DO NOT USE STANDARD WASHERS. THE FAILURE TO FOLLOW THESE WARNINGS MAY RESULT IN THE FRACTURE OF EITHER THE BRACKET OR BAR PIN WHICH COULD RESULT IN THE LOSS OF VEHICLE CONTROL AND POSSIBLE PERSONAL INJURY OR PROPERTY DAMAGE.

