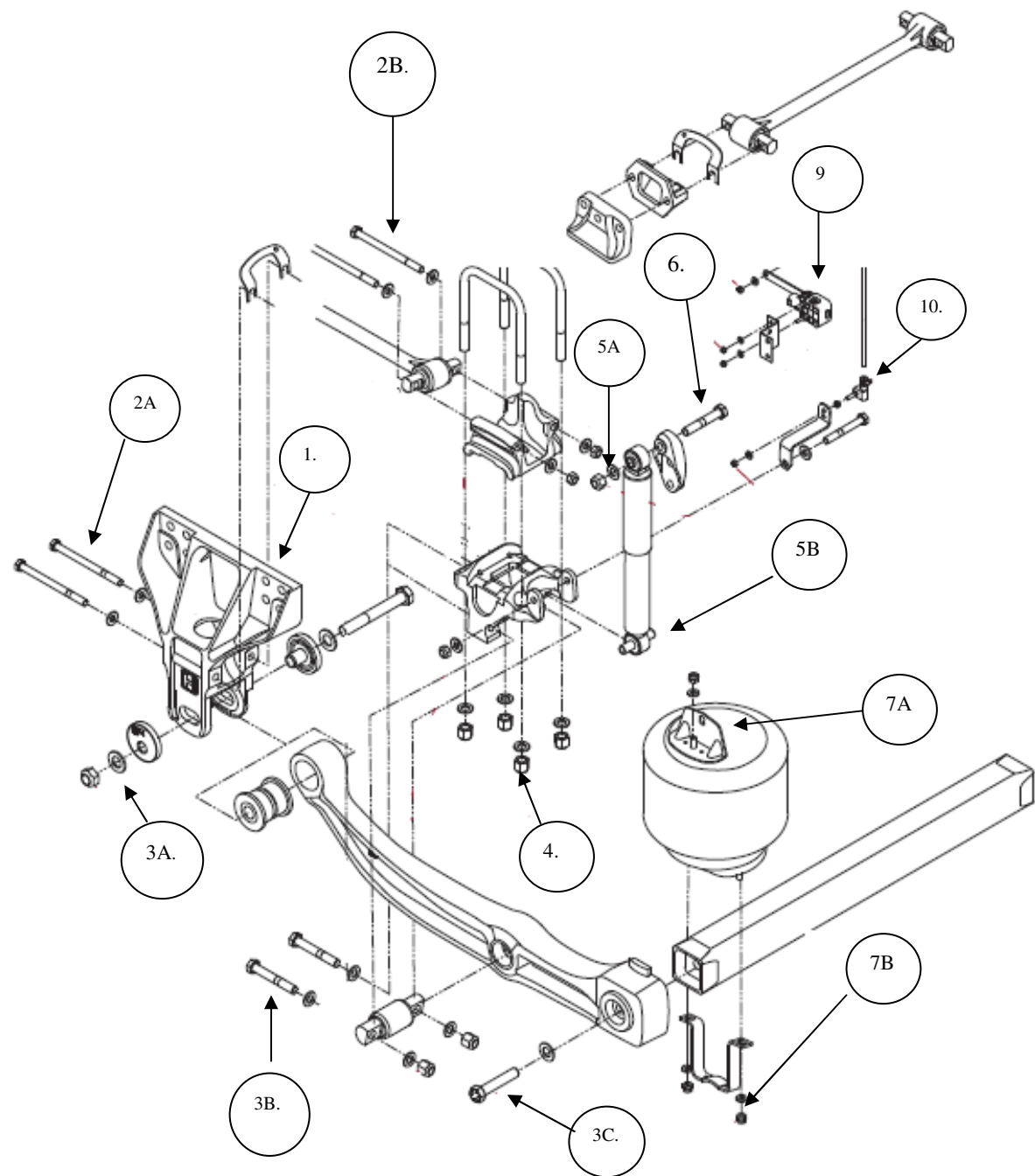


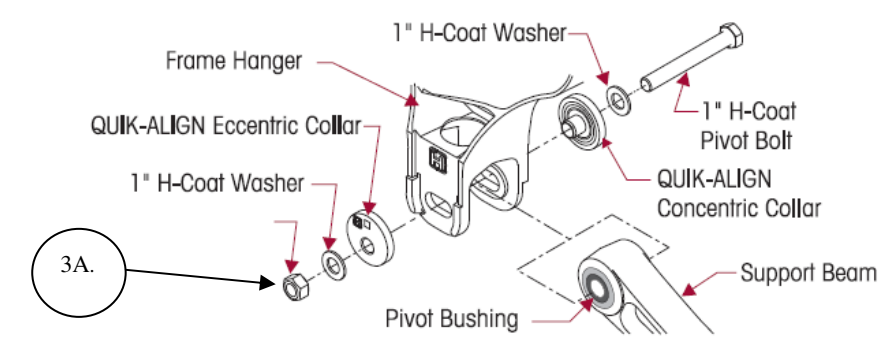
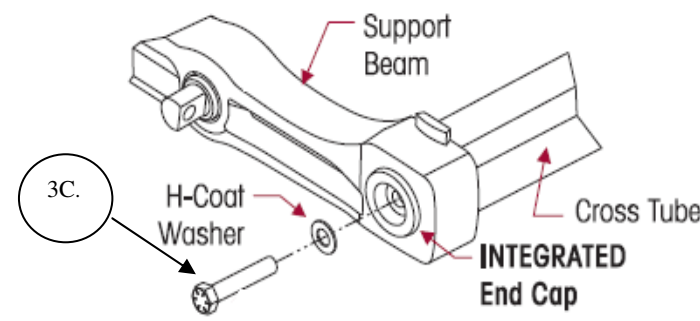


PRIMAAX EXTREME FAMILY SUSPENSION TORQUE REQUIREMENTS



Ser.	Component	Qty	Size	Torque N.m (ft.lb)
(a)	(b)	(c)	(d)	(e)
1.	Frame Hanger to Frame	16	3 / 4 -10 UNC	505 (375)
2.	Longitudinal Torque Rod	A. To Forward Hanger Mount B. To Rear Top Pad Mount	4 2	5/8 – 11 UNC 285 (210)
3.	Beam Assembly	A. QUIK-ALIGN A. QUIK-ALIGN Extreme Duty B. Centre D-Pin Bushing C. Cross Tube End Cap	2 2 2 2	1-14 UNF 1 1 / 4 -12 UNF 3 / 4 16 UNF 7/8 – 9 UNC 750 (550) 1760 (1300) 400 (300) See Note One
4.	U Bolt Lock Nuts	8	3 / 4 –16 UNF	510 (375)
5.	Shock Absorber	A. Upper Mount Locknuts B. Lower Mount Locknuts	2 2	3 / 4 -10 UNC 5/8 – 11 UNC 250 (185) 285 (210)
6.	Upper Shock Absorber Bracket to Frame	4	5/8 – 11 UNC	285 (210)
7.	Air Spring Assembly	A. To Frame B. Lower Cross Tube	2 4	5/8 – 11 UNC 1/2 – 13 UNC 285(210) 35 (25)
8.	Axle Stop to frame (Not Pictured)	6	5/8 – 11 UNC	285 (210)
9.	Height Control Valve to Frame Bracket	2	1/4 -20 UNC	15 (10)
10.	HCV Linkage	A. Jam Nut B. Locknut to HCV C. Linkage Clamp	2 2 1	5/16 18 UNC 5/16 18 UNC Until Securely Fastened 15 (10) 15 (10)

Note:
1. As at July 2011 Primaax EX Cross Tube Preventative Maintenance is Restricted to Visual Inspection Only



Any questions in relation to this Technical Bulletin please forward to the Hendrickson Product Support Group: Telephone (03) 8792 3600 or email to: technicalservice@hendrickson.com.au

Information contained in this literature was accurate at the time of publication, product changes may have been made after the publication date that are not reflected here